



THE SIDWELL COMPANY

# map news



Willard Hogge reviews tax maps with his successor, Randy Woloski.

## MAPS SAVE MC HENRY COUNTY TAXPAYER DOLLARS

It's easy to understand why McHenry County taxpayers aren't excited about getting their property tax bills on time.

However, what they don't realize is that since the bills were sent out on time this year, schools and other county departments saved thousands of dollars.

Sending tax bills is only one part of a complicated series of events that must be done accurately and on time in order to generate the revenue to pay for the operation of schools, road maintenance and improvements, parks and hundreds of other county services.

### On-time tax bills eliminate borrowing

If this revenue is not available when needed, (perhaps because the tax bills were sent out late) then schools and county departments must borrow money. In today's market this is expensive. And who eventually pays the cost of this extra expense? Right, the taxpayer.

McHenry County Supervisor of Assessment, Willard Hogge, saved his taxpayers this extra cost by sending out the tax bills right on schedule this year. This is the first time this has happened in over a decade.

Willard credits a large part of his success to the fact that he has a complete set of aerial based tax maps showing each of the 83,361 parcels in the county. A permanent parcel numbering system is also used to code all property information.

### Photo base shows assessment information

The county tax mapping and parcel numbering system was prepared by The Sidwell Company in compliance with the records required by the Illinois Appraisal Manual. The maps are drawn at scales of 1" = 100' and 1" = 200' and contain an accurate photo base which shows important assessment information such as new improvements, tillable and non-tillable areas and any changes in property size for the many lake lots in the county.

### Tax information on map overlay

The tax map information is contained on a separate overlay sheet which is punch-registered to the aerial base. The overlay contains property boundaries, dimensions, acreage, subdivision boundaries, and all parcel numbers.

Willard notes that potential problems with deeds are easily checked and corrected by using the aerial based maps. Occasionally, dimensions and acreage figures are listed incorrectly in a deed. These, plus gaps or overlapping ownerships, are quickly spotted before they become a problem.

### Permanent parcel numbering system speeds billing

In addition to accurate maps, the use of a permanent parcel numbering system helped speed the tax bills this year.

Each parcel is assigned a unique, geographic-oriented number. This number is used to code exemptions and other property information and allows the county to take full advantage of data processing.

Parcel information is updated and edited directly using CRT terminals which are connected to the computers of a local data processing service.

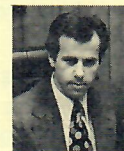
All information concerning land and improvements is filed using the parcel number as the key to each file.

Although Willard will be retiring, Randy Woloski, the new Supervisor of Assessments, says he expects to have McHenry County's tax bills out on time again next year.

### Mapping system saves money for taxpayers

He noted that the combination of accurate, up-to-date maps (Sidwell performs a continuing maintenance service for the county), a workable parcel numbering system and the use of data processing saves money for all county taxpayers.

## LYONS ADDRESSES ASSESSORS



Sidwell's aerial photography and tax mapping services were the topic of a presentation given by Business Development Representative, James D. Lyons, at a recent meeting of the Northeast and Northwest Indiana Assessors Association.

The presentation featured a slide presentation on tax mapping and numerous samples from completed Indiana projects.

## SIDWELL TO EXHIBIT AT NATIONAL CONFERENCE

Aerial photography, tax mapping and topographic mapping will be featured at Sidwell's exhibit at the 46th Annual Conference of the National Association of Counties, July 12-14, in Louisville, Kentucky.

Over 3,000 county officials from across the country will attend the three day conference.

In addition to the educational exhibit, Sidwell will be represented on a panel discussing tax mapping and parcel numbering at one of the concurrent workshops.



Sidwell technicians check new pipeline route.

## LAKE MICHIGAN WATER TAPPED BY SUBURBS

Plans are underway to tap one of the world's largest fresh water supplies and deliver it to the western suburbs surrounding the City of Chicago.

The project is being coordinated by the Northwest Water Commission and includes piping Lake Michigan water to communities in northwestern Cook and Lake Counties whose own underground supplies are becoming inadequate to meet rising demands.

### 60-inch main line

The water will be treated and pumped from the Evanston treatment plant north of Chicago via a 60-inch transmission main. The first stop will be a 30 million gallon holding reservoir. From there, smaller mains will deliver the water to individual community reservoirs for final distribution.

### Sidwell to map water line corridor

Since the pipeline route runs through heavily congested areas, a major portion of the initial project involves locating and designing the right-of-way corridor.

The Sidwell Company is providing detailed plan and profile maps to PRC Consoer Townsend Consulting Engineers to support the engineering work.

### 40 mile primary route

Precision aerial photography was taken of the 40 mile primary route and the 22 mile alternate route using our 3 1/2 inch super wide angle camera.

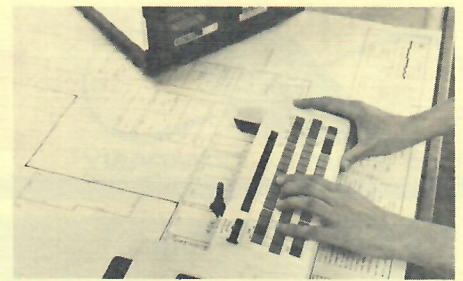
After ground control points are established, the photos will be used to prepare planimetric maps covering a 250' wide corridor for the entire transmission route. The maps will be drawn to meet National Map Accuracy Standards at a scale of 1" = 50'.

In addition to showing all roads, streams, houses and other ground features, the maps will contain precise spot elevations at 100 foot intervals along the route center line.

### Maps will be used for engineering studies

The final plan and profile map sheets will contain two "windows" of map detail positioned above a grid which will be used to plot the vertical profile of the transmission main. The maps will be used by Consoer Townsend to complete the engineering studies prior to excavation.

Although this is one of the first lake water distribution systems, participating communities expect it will be several years before they can begin using their new source of water.



## NEW EQUIPMENT WILL REDUCE MAPPING COSTS

Ask any draftsman and you'll find that one of the most time consuming tasks in preparing a final inked map is adding names and dimensional information.

This situation could soon change at Sidwell, thanks to a new piece of equipment now being tested.

The device is known as an electronic lettering instrument and it uses a micro-processor to draw everything from electronic symbols to a foreign language.

The plotter, which holds a standard Leroy inking pen, is controlled by ETMs (electronic template modules). These 8-track cartridge look-alikes contain pre-programmed information on lettering and dimensioning styles. Each module contains information on a specific style and can be changed by simply inserting a new module in the control unit.

In addition to various lettering styles, the size of the lettering can be changed by the use of a sliding percent scale on the plotter.

The plotter contains an "A-Z" upper and lower case keyboard plus numerals and symbols. Before any actual inking is done, a LED display shows the operator the information he has entered. Once this is verified, a touch of a button activates the plotter which precisely inks the information on the map.

According to Graphic Illustration Supervisor, Carole Karr, anyone can become proficient with the device in a short period of time. But the biggest factor, she notes, is that the lettering instrument can ink most map information in up to half the time it would take a trained person using a Leroy set.

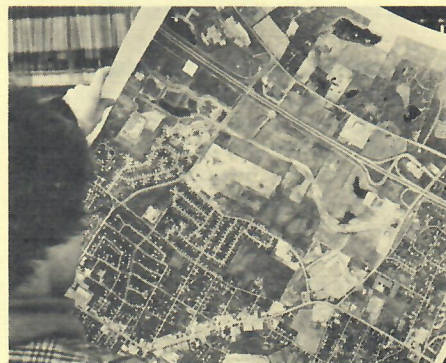
## SPECIAL OFFER ANNOUNCED

Prices have been reduced up to as much as 50 percent for copies of aerial photography covering six Chicago metropolitan counties during a special limited time offer.

The photography covers over 3,700 square miles in Lake, McHenry, Cook, DuPage, Kane and Will Counties of Illinois.

The photo enlargements are known as Aer-O-Maps and are printed at a scale of 1" = 400'. Each 33" x 33" sheet contains an area measuring two miles by two miles or a total of four square miles.

The photos clearly show roads, houses and other improvements. They make excellent visual aids and they provide an accurate base for real estate planning.



In addition to volume discounts, every order of \$30.00 or more will receive a free map ruler.

For more information or to place an order, call Customer Service Department at 231-8200.

## O'ROURKE SPEAKS TO ENGINEERS



Engineers from across the State of Wisconsin attended a presentation made by Sidwell Photogrammetrist Michael J. O'Rourke at a recent Public Works Association Conference.

The presentation dealt with the uses of aerial photography and mapping for municipal engineering projects and featured a slide presentation on photogrammetry.

Mr. O'Rourke also discussed Sidwell's Topo Plan mapping and how it provides a cost efficient system specifically designed for municipal mapping needs.

## FOR FURTHER INFORMATION ON ANY SIDWELL MAPPING SERVICES . . .

Write to The Sidwell Company, 28W240 North Avenue, West Chicago, IL 60185 or phone (312) 231-0206